

METAL LATH

Trim & Accessories



DIAMOND MESH LATH

A multi-purpose lath, used for all types of plaster work: partitions, fireproofing of steel beams, girders, columns, walls, etc. It is easily bent or shaped for curved surfaces and ornamental members. For easy installation and convenience, sheets are flat, of uniform width and squared at ends for uniform lapping. *Available: Galvanized*

| Std. Wt. per Sq. Yd. | Finish | Sheet Size | Pcs. per Bundle | Sq. Yds per Bundle |
|-------------------------------------|------------|------------|-----------------|--------------------|
| 1.75 lbs. | Galvanized | 27" X 96" | 10 | 20 |
| 2.50 lbs. | | 27" X 96" | 10 | 20 |
| 3.40 lbs. | | 27" X 96" | 10 | 20 |
| 50 bundles per pallet = 1,000 yards | | | | |

Self-Furring Lath

(Lath with dimples.) Ideal for exterior stucco and fireproofing structural beams and columns. The self-furring dimples hold the metal lath 3/8" away from the surface to be plastered. The lath has staggered indentations spaced 3 1/2" apart horizontally and 2" apart vertically. *Available: Galvanized.*

| Std. Wt. per Sq. Yd. | Finish | Sheet Size | Pcs. per Bundle | Sq. Yds per Bundle |
|-----------------------------------|------------|------------|-----------------|--------------------|
| 1.75 lbs. | Galvanized | 27" X 96" | 10 | 20 |
| 2.50 lbs. | | 27" X 96" | 10 | 20 |
| 3.40 lbs. | | 27" X 96" | 10 | 20 |
| 25 bundles per pallet = 500 yards | | | | |



ASPHALT PAPER-BACKED METAL LATH

Asphalt Paper-Backed Flat Diamond Mesh

A multi-purpose diamond mesh metal lath with a continuous backing of asphalt saturated kraft paper. Ideal for stucco finishing, ceramic tile installations, behind plaster and as extra protection against wet areas. The paper is offset to assure uniform installation and meets full Federal Specifications. (UUB-790A, Style 2, Grade D)

Asphalt Paper-Backed Self-Furred Diamond Mesh

The same general description as standard paper backed lath with the additional advantages of self-furring.

| Std. Wt. per Sq. Yd. | Finish | Sheet Size | Pcs. per Bundle | Sq. Yds per Bundle |
|-----------------------------------|------------|------------|-----------------|--------------------|
| 1.75 lbs. + paper | Galvanized | 27" X 96" | 10 | 20 |
| 2.50 lbs. + paper | | 27" X 96" | 10 | 20 |
| 3.40 lbs. + paper | | 27" X 96" | 10 | 20 |
| 25 bundles per pallet = 500 yards | | | | |

Acceptable Lath Manufacturers:

Clark/Western, Dietrich, Dale Incor

Metal Lath

Industry Application Standards for Metal Lath

All metal lath products must comply with the recommended specifications of the Metal Lath/Steel Framing Association, as well as the applicable provisions of the following U.S. Standards and/or Specifications, unless otherwise noted.

Metal Lath:

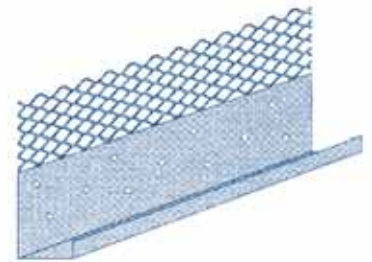
- 1.) ASTM C-847 Standard Specification for Metal Lath
- 2.) ASTM C-841 Standard Specification for Installation of Interior Lathing and Furring
- 3.) ASTM C-1063 Standard Specification for Installation of Lathing and Furring for Portland Cement-Based Plaster
- 4.) CEGS 09100 (1) Furring (Metal) Lathing and Plastering
- 5.) CEGS 09101 Stucco
- 6.) CEGS 09180 Stucco, Cement
- 7.) CEGS 09205 (1) Metal Furring and Lathing
- 8.) QQ-L-101C Federal Specifications for Metal Lath and other plaster bases

X-66 EXPANDED FLANGE CASING BEAD

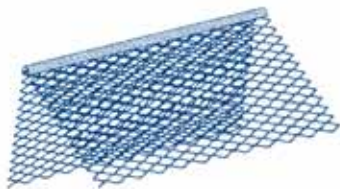
| Size | Material | Pcs. per Box |
|-------|--------------------|--------------|
| 1/4 | Galvanized or Zinc | 30 |
| 3/8 | Galvanized or Zinc | 30 |
| 1/2 | Galvanized or Zinc | 30 |
| 3/4 | Galvanized or Zinc | 30 |
| 5/8 | Galvanized or Zinc | 30 |
| 7/8 | Galvanized or Zinc | 30 |
| 1 | Galvanized or Zinc | 30 |
| 1 1/4 | Galvanized or Zinc | 30 |
| 1 3/8 | Galvanized or Zinc | 30 |

Furnished in stock lengths of 10 feet
Packed 300 feet per box

Casing beads are used to terminate plaster edge in a clean straight line at doors, windows or other openings. Also an ideal separating screed or plaster stop. A slight ridge of nailing holes provides easy installation. *Available: Galvanized with or without weep holes. Zinc available upon request.*



CORNER BEAD



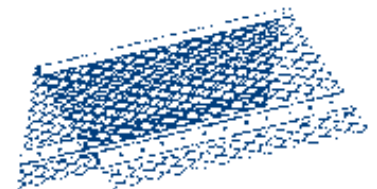
X-1 Corner Bead

Expanded diamond mesh wing permits keying the plaster near the nose of the bead. This mesh ensures a perfect bond and provides effective reinforcement where it is most needed. Provides straight corners. Flexible enough to use over uneven surfaces.

X-2 Corner Bead

Provides extra strength, as well as width. The ultimate in expansion beads for reinforcing corners. Has 3 1/4" expanded flanges for use on masonry, beams and for column fire-proofing.

| Lengths | Material | Pcs. per Box |
|---------|--------------------|--------------|
| 10' | Galvanized or Zinc | 30 |



#15 EXPANSION JOINT

| Size | Material | Pcs. per Box |
|------|--------------------|--------------|
| 1/4 | Galvanized or Zinc | 24 |
| 3/8 | Galvanized or Zinc | 24 |
| 1/2 | Galvanized or Zinc | 24 |
| 3/4 | Galvanized or Zinc | 24 |
| 1 | Galvanized or Zinc | 24 |

Furnished in stock lengths of 10 feet
Packed 240 feet per box

This product is used in areas where considerable expansion and contraction may occur in large plaster/stucco walls and ceilings. This neat, inconspicuous expansion joint minimizes cracking and assures proper plaster and stucco thickness. Taped for quicker clean out and finishing.



CONTROL JOINT



Used in areas of extreme expansion and contraction, this unique product permits an expansion opening form 1.8" (3mm) to 5.8" (15mm) and is taped for clean out and finishing.

| Size | Material | Pcs. per Box |
|------|----------|--------------|
| #38 | Zinc | 25 |
| #50 | Zinc | 25 |
| #75 | Zinc | 25 |
| #100 | Zinc | 25 |

Furnished in stock lengths of 10 feet
Packed 250 feet per box

SHORT FLANGE CORNERAID



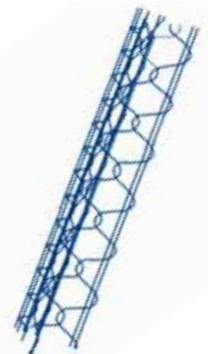
Shaped for exterior or interior corners on doors, windows and panel systems where a short flange or stop is needed. It offers one standard 2 1/2" leg and one short 1 1/2" leg.

| Lengths | Ft. per Ctn. | Approx. wt./ctn |
|---------|--------------|-----------------|
| 10' | 400 | 43 lbs. |

KWIK CORNER/CORNERAID

| Lengths | Ft. per Ctn. | Approx. wt./ctn. |
|---------|--------------|------------------|
| 10' | 400 | 49 lbs. |

A welded wire right angle assembly offering a truer, stronger exterior corner that reduces cracking in cement plaster. Kwik Corner is nailed, stapled or wire-tied over the lathing system sufficiently to maintain its plumb.



Acceptable Trim and Accessories Manufacturers:

K-Lath, Stockton Products, Clark/Western, Dietrich, Dale Incor, Niles Building Supply

Industry Application Standards for Trim & Accessories

All metal lath products comply with the recommended specifications of the Metal Lath/Steel Framing Association, as well as the applicable provisions of the following U.S. Standards and/or Specifications, unless otherwise noted.

Metal Lath Accessories:

A. Corner Beads, Casing Beads, Expansion and Control Joints

- 1.) Interior ASTM C-841 Standard Specifications for Installation of Interior Lathing and Furring
- 2.) Exterior ASTM C-1063
CE240.01 (3) Standard Specification for Installation of Lathing and Furring for Portland Cement-Based Plaster

B. Corneraid

ASTM C-841 Standard Specification for Installation of Interior Lathing and Furring

C. Cold Rolled Channels: (2)

ASTM C-841 Standard Specification for Installation of Interior Lathing and Furring
CE 240.01 Furring (Metal) Lathing and Plastering



220 Burleson, San Antonio, TX 78202
800-358-4785 Fax: (210) 472-2946
www.teifs.com

ParexLahabra Inc. Corporate Office
4125 E. La Palma Ave, Suite 250
Anaheim, CA 92807
Phone: (714) 778-2266 Fax: (714) 774-2074

Product T511 - 12/06 © ParexLahabra

This information is designed to guide you and has been conscientiously compiled according to the latest state of our technology. No liability can be accepted in connection with the use of the product because of the great variety of applications and working conditions.