

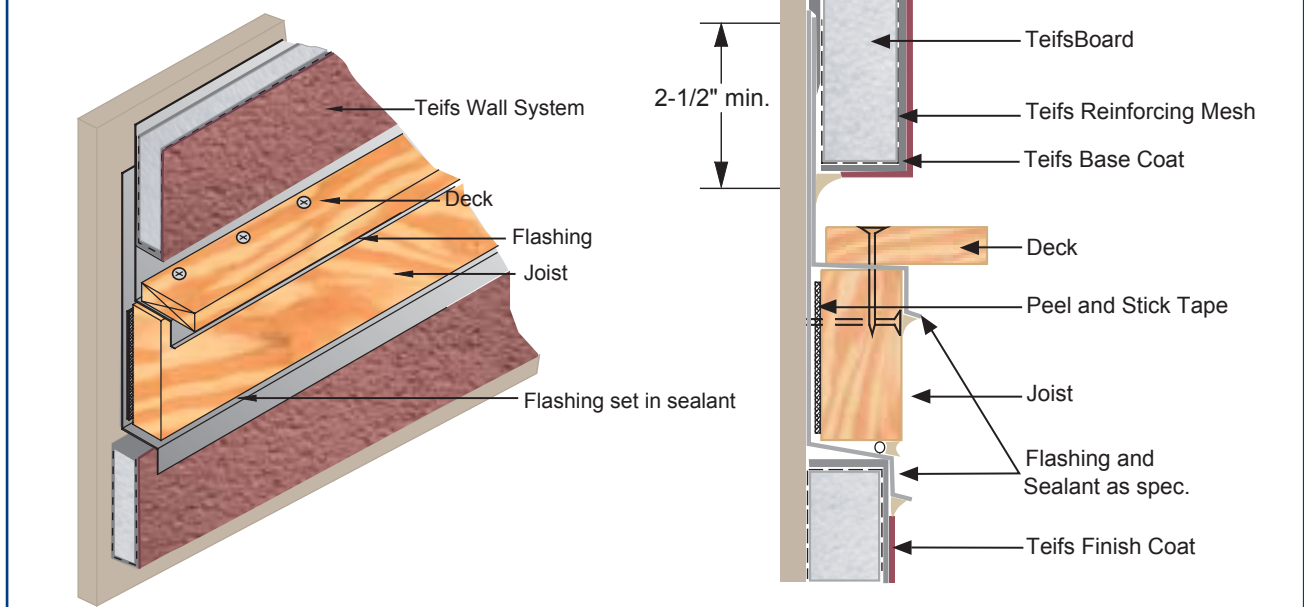
Teifs TEK TIPS

April 2004
Category 3

Detailing Series

The issue:

How do you detail flashing with EIFS for a Deck?



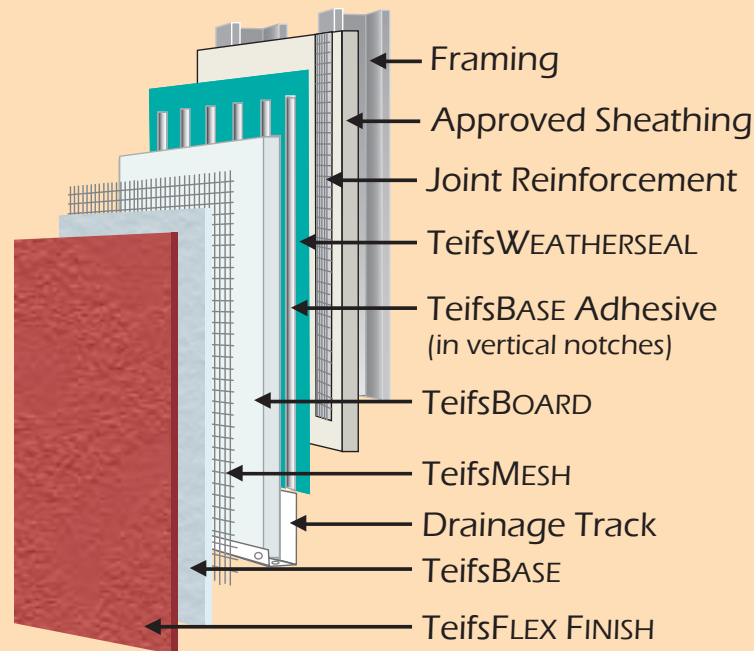
Deck construction and flashing is independent from the EIFS and is not dependent on the cladding. Most flashings will not be installed by the EIFS applicator which demands that the detail be drawn correctly and proper coordination of trades by the General Contractor be handled appropriately to ensure proper application of all flashings prior to installation of the EIFS materials. One of the most common places that flashing is missing or incorrectly installed is around a deck. This can result in water intrusion.

INSTALLING DECK FLASHING

- To keep water from entering behind the cladding or deck, the ledger board and the attachment of the deck ledger board must be flashed above, below and to the sides of the deck.
- Flashing should extend behind the EIFS a minimum of 2" (50 mm).
- Slide a folded flashing up under the first flashing and position it below the planned position of the deck.
- Provide flashing end dams on each side of the second folded flashing. Set the end dams in sealant. End dams prevent water from getting around the ends of the deck and behind the cladding.
- Self sealing Peel and Stick Tape should be applied behind the deck ledger and to the flashing to self seal the fastener penetration.
- Terminate the EIFS a minimum of 2" (50mm) above the deck. This space allows for system edge termination, for ease of roof or deck replacement or repair, and for quicker drying if moisture is present. It also provides for inspection of the system and flashing to ensure proper installation has occurred.
- Drainage systems will be installed in the same manner with the addition of a drainage track at the bottom of the EIFS termination.



TeifsWEATHERTIGHT VNT Wall System



This Exterior Insulation and Finish System features multiple layers of protection against water penetration:

- ❖ *TeifsWEATHERSEAL, a special 100% acrylic air shield and waterproof protective coating*
- ❖ *Drainage created by installation of vertical notches of adhesives*
- ❖ *TeifsLAMINA (base coat, mesh, and finish), tested above and beyond industry standards*
- ❖ *Drainage Track*

Look for more TeifsTEK TIPS Coming Soon!



220 Burseson • San Antonio, Texas • 78202
Phone (210) 472-2935 • Fax (210) 472-2946 • 1-800-358-4785
www.teifs.com • teifs@teifs.com