

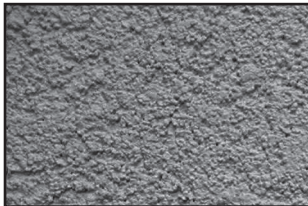


TeifsFlex

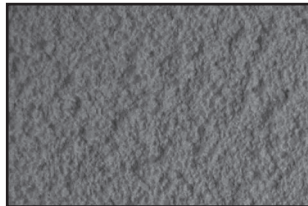
Tejas Piedra Cuarzo

Tejas Fine Piedra Grande Freedom

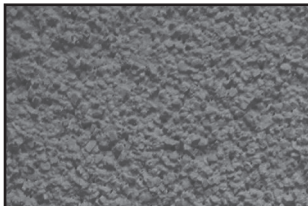
Premium Acrylic Finishes



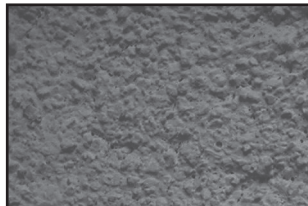
TEJAS



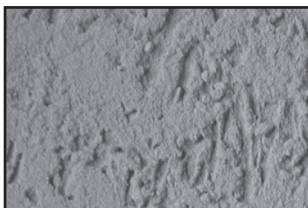
TEJAS FINE



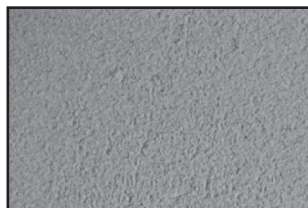
PIEDRA



PIEDRA GRANDE



CUARZO



FREEDOM

DESCRIPTION:

- 100 percent acrylic-based textured finish
- Integrally colored with high-quality pigments
- Exceeds EIMA recommendations

USES:

Exterior or interior finish coat over:

- Teifs Exterior Insulation and Finish Systems
- Properly prepared masonry, stucco, and concrete surfaces
- Interior application over drywall, plaster, or properly prepared masonry or concrete

COMPOSITION:

- Binder base: 100 percent acrylic polymer with surface-hardening property
- Aggregate: Pure crushed marble, rust-free
- Water-based: VOC-compliant
- Pigment base: Titanium dioxide
- Color: Teifs standard colors or tinted to desired custom color



Tejas Piedra Cuarzo

Tejas Fine Piedra Grande Freedom

Premium Acrylic Finishes

COVERAGE:

Depending on the condition of the substrate and method of application, approximate coverages are:

Cuarzo

120-140 sq. ft. (11.15-13m²) per pail

Piedra

70-95 sq. ft. (11.3-13.47m²) per pail

Piedra Grande

110-125 sq. ft. (10.22-11.6m²) per pail

Tejas

125-140 sq. ft. (11.6-13m²) per pail

Tejas Fine

130-145 sq. ft. (12.07-13.47m²) per pail

Freedom

Coverage varies due to texture.

CONTAINER:

65 lb (29.5kg) net weight in plastic pails.

- Storage: Protect from sun and freezing at all times
 - Do not stack pails more than 3 pails high
- Shelf Life: One year if protected from sun and freezing

DRYING TIME:

24 hours under normal conditions. High humidity and low temperatures extend drying time.

CLEANUP:

Water-soluble prior to drying. Clean tools and containers with water prior to drying.

SURFACE PREPARATION:

- Remove surface contaminants such as dust or dirt without damaging the substrate.
- For previously painted surfaces, all loose and chalking paint must be removed, and glossy surfaces dulled.

- New concrete and masonry must be clean and cured a minimum of 28 days.
 - Check concrete surfaces for alkalinity and treat. Any form-release agents or bond breakers must be removed.
 - Uneven concrete or masonry can be leveled with TeifsBase, TeifsBase DB, or other suitable, compatible product.
 - For interior drywall, prepare as for painting.
 - Prime with TeifsPrime or Sanded Primer.
 - For application of TeifsPrime or Sanded Primer, refer to the Product Data Sheet.
 - For additional options, contact Teifs Technical Services Department.
- ### MIXING:
- Use clean equipment for mixing and preparation.
 - Stir to obtain a homogeneous consistency using a heavy-duty 1/2-in. (13mm) drill with a rust free paddle at 400-500 rpm. Avoid air entrainment.
 - Add the amount of water needed to achieve finish texture. To avoid color variations, add the same amount of water to each pail of finish as indicated on product pail.

APPLICATION:

- Read the entire label before using this product.
- Always maintain a wet edge and work to corners or joints. For best color consistency, use finish with the same batch number within a wall section.
- Keep container closed when not in use.
- Using a stainless steel trowel, apply a level coat of TeifsFlex Cuarzo, Tejas, Tejas Fine, Piedra, or Piedra Grande to a uniform thickness. Cuarzo, Piedra Grande, and Tejas Fine should be no thicker than the largest aggregate. Piedra and Tejas should be one and a half times thicker than the largest aggregate. The texture is achieved by hand motion and/or type of tool used. For uniformity of color and texture, maintain a wet edge while applying.
- TeifsFlex Freedom: Using a stainless steel trowel, install a coat of slightly thicker than 1/16 in. (0.16 cm). The texture may be either pulled out of this base using a clean plastic float and moderate pressure with the appropriate and consistent motion or the texture may be achieved by adding more TeifsFlex Freedom finish to the base coat and using similar texturing motions to those used with other plaster materials, such as a skip trowel finish. The thickness of any TeifsFlex Freedom finish texture must not exceed 1/4 in. (0.634 cm).

LIMITATIONS:

- Ambient and surface temperature must be 40°F (4°C) or higher during application and drying time. Supplemental heat and protection from precipitation must be provided as needed.
- Use only on surfaces that are sound, clean, dry, unpainted, and free from any residue that might affect the ability of the finish to bond to the surface.
- Avoid application in direct sunlight in hot weather.



Corporate Office

ParexLahabra, Inc.
4125 E. La Palma Avenue,
Suite 250
Anaheim, CA 92807
(714) 778-2266
(866) 516-0061, Tech Line

Sales Office

Teifs
220 Burluson
San Antonio, TX 78202
(800) 358-4785

Plants

French Camp, CA
San Antonio, TX

