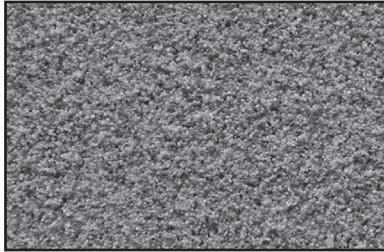




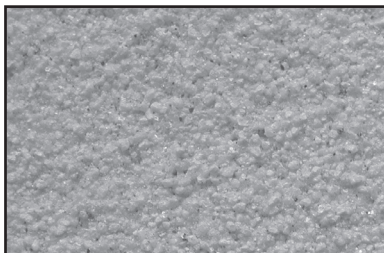
Tuffstone

Earthstone

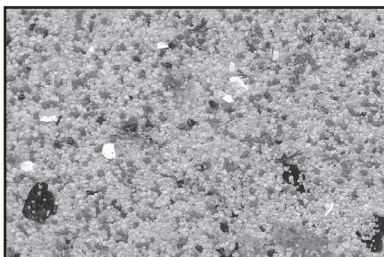
Tuffstone Granite



TUFFSTONE



EARTHSTONE



TUFFSTONE GRANITE

DESCRIPTION:

- An attractive multi-color wall finish made of colored aggregates
- Clear 100 percent acrylic vapor-permeable binder
- Can be used in interior and exterior application ideal for high traffic interior areas.
- A highly durable, scratch-resistant finish
- Easily repaired

USES:

Interior and exterior finish coat over:

- Teifs Exterior Insulation and Finish Systems
- Properly prepared stucco, masonry, brick and concrete surface
- Interior application over drywall, plaster or properly prepared masonry or concrete

COMPOSITION:

- Binder Base: Acrylic copolymer
- Aggregate: colored quartz aggregates
- Water-based: VOC compliant
- Color: Standard colors for Tuffstone, Earthstone, and Tuffstone Granite



Teifs

Tuffstone

Earthstone

Tuffstone Granite

COVERAGE:

Depending on the condition of the substrate and method of application, approximate coverages are:

Tuffstone

- Including both the troweled and the sprayed coats:
83-111 sq. ft. (7.7-10.3m²) /pail
- Troweled tight coat alone:
129-185 sq. ft. (12-17.2m²) /pail
- Fine spray alone:
231-277 sq. ft. (21.4-25.7m²) /pail

Earthstone

- 65-102 sq. ft. (6-9.5m²) /pail

Tuffstone Granite

- 70-102 sq. ft. (7-9.5m²) /pail

CONTAINER:

60 lbs (27.2 kg) net weight in plastic pails

- Storage: Protect from sun and freezing at all times
-Do not stack pails more than 3 pails high.
- Shelf Life: One year if protected from sun and freezing

DRYING TIME:

24 hours under normal conditions. High humidity and low temperatures extend drying time.

CLEANUP:

Water soluble prior to drying. Clean tools and containers with water prior to drying.

SURFACE PREPARATION:

- Remove surface contaminants such as dust or dirt without damaging the substrate.
- For previously painted surfaces, all loose and chalking paint must be removed, and glossy surfaces must be dulled.
- New concrete and masonry must be clean and cured a minimum of 28 days.
- Check concrete surfaces for alkalinity and treat. Any form-release agents or bond breakers must be removed.
- Uneven concrete or masonry can be leveled with Teifs Base or Base DB or other suitable, compatible product.
- For interior drywall, prepare as for painting.

- To ensure the consistency of the color, apply a coat of tinted Sanded Primer to all surfaces.

- For application of Sanded Primer, refer to the Product Data Sheet.

- For additional options, contact Teifs Technical Services Department.

MIXING:

- Stir to obtain a homogeneous consistency using a heavy duty 1/2 in. (13mm) drill with a rust-free paddle at 400-500 r/min. Avoid air entrainment.

- A small amount of clean, potable water may be added to aid workability. To avoid texture variations, add the same amount of water to each pail of finish.

APPLICATION:

- For Tuffstone Granite: apply to an even layer, using a clean, stainless steel trowel. Work the trowel in a single direction to make a smooth surface. Lightly float the surface using a clean plastic float several times. This will bring the large mica to the surface and enhance the granite appearance.

- For Tuffstone Finish: use a clean stainless steel trowel and apply a uniform coat slightly thicker than the aggregate size. Level and finish to a flat surface.

- Apply a fine spray of Tuffstone finish over the troweled Tuffstone finish layer for a more uniform texture and reduced appearance of gloss.

- For Earthstone: spray the first coat of Earthstone finish over the primed surface. Earthstone may be sprayed by hopper gun or other suitable plaster spray equipment (Tuffstone can be applied in this manner as well, especially for large surfaces). Use air pressure approximately 15-25 psi. If aggregate bounces back off the wall, the air pressure is too high. A second coat of sprayed Earthstone may be needed to achieve the desired look.

For all Stone Finishes

- Always maintain a wet edge and work to the corners or joints

- For best consistency, use finish with the same batch number within a wall section.

- Keep container closed when not in use.

LIMITATIONS:

- Ambient and surface temperatures must be 50°F (10°C) or higher during application and drying time. Supplemental heat and protection from precipitation must be provided as needed.

- Use only on surfaces that are sound, clean, dry, unpainted and free from any residue which may affect the ability of the finish to bond to the surface.

- Avoid application in direct sunlight in hot weather.

- Due to the nature of the raw materials used in this product, all material should be made at the same time to avoid color matching problems. Teifs cannot assure color combinations will match between batches made at different times.

- Do not use as waterproofing. Do not use below grade.

- Do not use directly over foam plastic, gypsum board, or other insulation type boards.

- Do not apply in a thickness greater than 1/8 in. in any single coat.

- Must not be used on exposed exterior horizontal surfaces. Minimum slope is 27° or 6:12 inches.

- Do not use on surfaces subject to hydrostatic pressure or continuous or intermittent water immersion.

- Avoid application over damp surface or in excessively humid conditions. Finish may become milky in color after it gets wet. This should dissipate with subsequent wetting and drying cycles.



Corporate Office
ParexLahabra, Inc.
4125 E. La Palma Avenue,
Suite 250
Anaheim, CA 92807
(714) 778-2266
(866) 516-0061, Tech Line

Sales Office
Teifs
220 Burlinson
San Antonio, TX 78202
(800) 358-4785

Plants
French Camp, CA
San Antonio, TX

