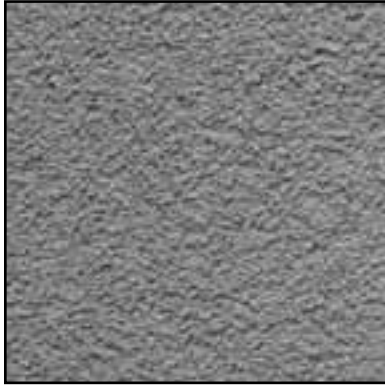


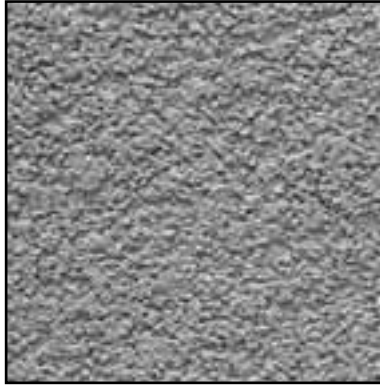


Aggregate 1.0 Liberty Aggregate 1.5 Swirl

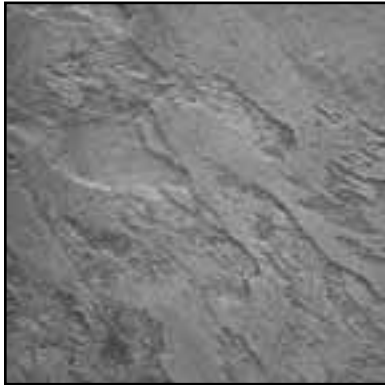
TeifsLastic Elastomeric Finishes



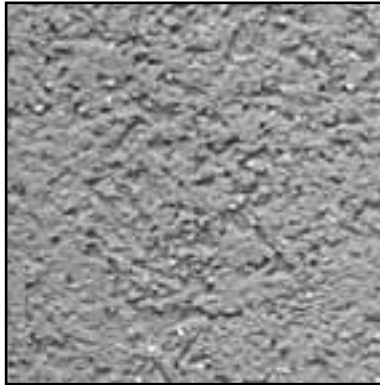
Aggregate 1.0



Aggregate 1.5



Liberty



Swirl

DESCRIPTION:

- 100 percent acrylic-based elastomeric textured finish
- DPR (Dirt Pick-up Resistance) chemistry
- Highly flexible: can bridge existing hairline cracks
- Integrally colored with high quality pigments

USES:

Finishing coat for:

- Teifs Scratch & Brown, Sanded Scratch & Brown, One Coat, and Sanded One Coat
- New or existing stucco and concrete surfaces
- Renovation of old stucco and concrete walls
- Finishing of masonry walls in combination with either Teifs Base or Base DB Base Coat & Adhesive as leveler.



COVERAGE:

Depending on the condition of the substrate and method of application, approximate coverages are:

- 1.0 Aggregate:
149-167 sq. ft. (13.80-15.53 sq. m.) /pail
- 1.5 Aggregate:
98-107 sq. ft. (9-10 sq. m.) /pail
- Liberty:
121-130 sq. ft. (11.21-12 sq. m.) /pail
- Swirl - random aggregate:
93-102 sq. ft. (8.63-9.5 sq. m.) /pail
depending on texture

CONTAINER:

65 lbs. (29.5 kgs) net weight in plastic pails.

- Storage: Protect from sun and freezing at all times
- Do not stack pails more than 3 pails high
- Shelf Life: One year if protected from sun and frost

DRYING TIME:

48 hours under normal conditions. High humidity and low temperatures extend drying time.

CLEAN-UP:

Water-soluble prior to drying. Clean tools and containers with water prior to drying.

SURFACE PREPARATION:

- Remove surface contaminants such as dust or dirt without damaging the substrate.
- For previously painted surfaces, all loose and chalking paint must be removed, and glossy surfaces dulled.
- New concrete and masonry must be clean and cured a minimum of 28 days.
- Check concrete surfaces for alkalinity and treat. Any form-release agents or bond breakers must be removed.

- Uneven concrete or masonry can be leveled with either Teifs Base or Base DB Base Coat & Adhesive or other suitable, compatible product.
- For interior drywall, prepare as for painting. Minimum level 3 drywall finish.
- Prime with Teifs Prime.
- For application of Teifs Prime refer to the Product Data Sheet.
- For additional options, contact Parex USA Technical Support.

MIXING:

- Use clean equipment for mixing and preparation.
- Stir to obtain a homogeneous consistency using a heavy-duty 1/2 in. (13mm) drill with a rust-free paddle at 400-500 rpm. Avoid air entrainment.
- A small amount of clean, cool, potable water may be added to aid workability. Do not exceed 8 oz. (1 cup) (.24 L) per full pail of finish. To avoid color and texture variations, add the same amount of water to each pail of finish.

APPLICATION:

- Read the entire label before using this product.
- Always maintain a wet edge and work to corners or joints. For best color consistency, use finish with the same batch number within a wall section. Keep container closed when not in use.
- Application: use a clean stainless steel trowel and apply a uniform thickness of the largest aggregate size of the finish. Texturing: use a clean plastic float or stainless steel trowel, wipe frequently. Apply moderate pressure with consistent motion, rolling the large aggregates to obtain the desired texture.

LIMITATIONS:

- Ambient and surface temperatures must be 40 °F (4°C) or higher during application and drying time. Provide supplemental heat and protection from precipitation as needed.
- Use only on surfaces that are sound, clean, dry, and free from any residue which may affect the ability of the finish to bond to the surface.
- Application in direct sunlight in hot weather may adversely affect aesthetics.
- Due to the composition of this product, minor pin holes may be noticeable in the cured finish.

WARNING:

- Read complete warning information printed on product container prior to use. For medical emergency information, call 1-800-424-9300.
- For more information on handling this product refer to its Material Safety Data Sheet (MSDS). The most current MSDS and Product Data Sheet (PDS) can be found on our website.
- This Product Data Sheet has been prepared in good faith on the basis of information available at the time of publication. It is intended to provide users with information about the guidelines for the proper use and application of the covered product(s) under normal environmental and working conditions. Because each project is different, Parex USA, Inc. cannot be responsible for the consequences of variations in such conditions, or for unforeseen conditions.



Corporate Office

Parex USA, Inc.
4125 E. La Palma Ave., Suite 250
Anaheim, CA 92807
(866) 516-0061
Tech Support: (800) 226-2424

Facilities

French Camp, CA
San Antonio, TX
Riverside, CA
Redan, GA
Wilkes Barre, PA

